



Adopted February 20, 2018

# **PARKS & RECREATION PLAN 2018-2022**

**BATH CHARTER TOWNSHIP**

## **Township Board**

**Adopted on February 20, 2018**

Jack Phillips, Supervisor

Kathleen McQueen, Clerk

Steve Wiswasser, Treasurer

Cindy Cronk, Trustee

Denise, McCrimmon, Trustee

Allen Rosekrans, Trustee

Dan Stockwell, Trustee

## **Parks & Recreation Committee**

**Adopted on February 12, 2017**

Denise McCrimmon, Board Representative & Chair

Dwight Washington, Vice-Chair

Jack Bails, Secretary

Dan Derksen, Member

Larry Fewins-Bliss, Member

Ray Kotke, Member

Alden (Coh) Rohen, Former Chair

## **Township Administration & Staff**

Dan Wietecha, Superintendent

Karen Hildebrant, Administrative Services

Rebecca Goodwin, Parks & Recreation Director

Brian Shorkey, Planning Director

***Bath Charter Township***  
*14480 Webster Road*  
*P.O. Box 247*  
*Bath, MI 48808*  
*(517) 641-6728*  
*[www.bathtownship.us](http://www.bathtownship.us)*

# TABLE OF CONTENTS

|   |     |
|---|-----|
| Township Board.....   | 1   |
| Parks & Recreation Committee.....   | 1   |
| Township Administration & Staff .....   | 1   |
| Introduction.....   | 3   |
| Community Description.....  | 4   |
| Administrative Structure.....   | 6   |
| Recreation Inventory.....   | 9   |
| Community Input.....  | 16  |
| Goals & Objectives .....  | 20  |
| Action Plan .....   | 22  |
| Summary & Adoption.....   | 24  |
| Appendix A .....  | 25  |
| Parks & Recreation Director Job Description   |     |
| Appendix B .....  | 28  |
| 2018 Parks & Recreation budget  |     |
| Appendix C .....  | 32  |
| Map of Bath Charter Township Parks, Parcels & Facilities                            |     |
| Appendix D .....  | 34  |
| Other Significant Recreational Facilities   |     |
| Appendix E .....  | 43  |
| Michigan Department of Natural Resources Post-Completion Self-Certification Reports |     |
| Appendix F .....  | 57  |
| Community Input Gathered  |     |
| Appendix G.....   | 108 |
| Publicizing for Public Input  |     |
| Appendix H.....   | 118 |
| Action Plan Supplemental Materials  |     |
| Appendix I.....   | 132 |
| Review & Adoption of Plan   |     |

## **INTRODUCTION**

### *A Community Based Recreation Plan*

Bath Charter Township has developed a Recreation Plan to serve as a guideline to improve recreation facilities and develop new recreational opportunities. To that end, this document forms the basis to guide policy for implementation of improvements and new initiatives that will meet the recreational goals and interests of the Bath Charter Township community.

Bath Charter Township officials intend to use this Recreation Plan to guide their work on all future recreational and park projects within the Township. This is also a strategic document that articulates specific goals to various agencies and organizations that fund local recreational and park improvement projects. Specifically, this Recreation Plan was developed in accordance with the Guidelines for the Development of Community Park, Recreation, Open Space, and Greenway Plans published by the Michigan Department of Natural Resources (MDNR) Grants Management.

## COMMUNITY DESCRIPTION

### *About Bath Charter Township*

Bath Charter Township is located in the southeastern corner of Clinton County. According to the 2010 United States Census, the population of the Township was 11,598, a 53.8 percent increase over the 2000 Census when the population was 7,541.

*Figure 1: Additional 2010 Census statistics.*

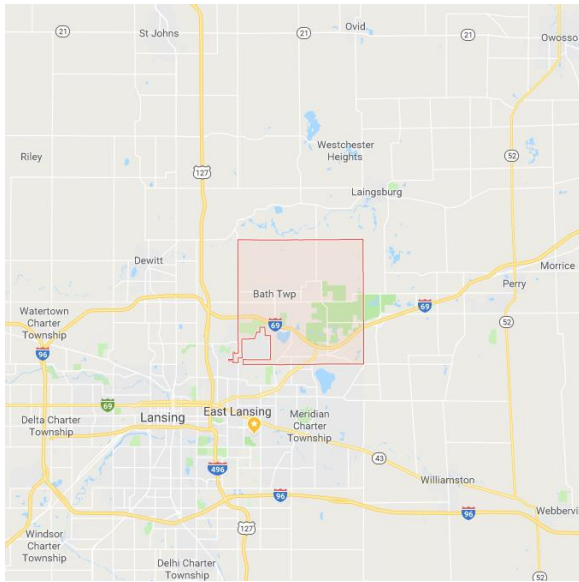
|                          | <b>Bath Charter Township</b> | <b>Clinton County</b> | <b>State of Michigan</b> |
|--------------------------|------------------------------|-----------------------|--------------------------|
| Population 2010 Census   | 11,598                       | 75,382                | 9,883,640                |
| Population 2000 Census   | 7,541                        | 64,753                | 9,938,444                |
| Median Age               | 30.1                         | 38.4                  | 38.9                     |
| % of Population Under 19 | 23                           | 27.5                  | 26.8                     |
| % of Population 62+      | 13                           | 16.2                  | 17.1                     |
| % High School Graduate+  | 93.8                         | 93.0                  | 88.0                     |
| % Unemployed             | 5.5                          | 6.9                   | 7.3                      |
| Median Household Income  | \$59,163                     | \$58,016              | \$48,432                 |
| Per Capita Income        | \$28,091                     | \$27,223              | \$25,135                 |
| Average Household Size   | 2.45                         | 2.60                  | 2.49                     |
| Median Housing Value     | \$182,300                    | \$167,700             | \$144,200                |

Bath Charter Township, according to Michigan Resource Information System (MIRIS), is the largest of the Townships in Clinton County, containing 23,351 acres, of which 1,138 acres are in a 425 Agreement with the City of East Lansing and Dewitt Charter Township. Due to Bath Charter Township's lowland nature, much of the Township is dominated by water features, including wetlands, lakes, rivers, streams, and ponds.

Adjacent to Bath Charter Township lays Dewitt Charter Township to the west, Victor Township to the north, Woodhull Township in Shiawassee County to the east, and Meridian Township in Ingham County to the south. Clinton County is part of what is known as the Tri-County Region and shares that title with Ingham and Eaton Counties. The City of Lansing is the largest city in the Tri-County Region, which plays a vital role in its surrounding communities and is also the location of Michigan's state capitol.

As mentioned previously, Bath Charter Township is the fastest growing Community in the Tri-County Region in terms of population. In the past 20 years, the southern portion of Bath Charter Township has changed dramatically. Residential, commercial, and mixed-use developments are beginning to

Figure 2: Location of Bath Charter Township, Clinton County, Michigan.



dominate the southern portion of the Township. In the land use assessment, three separate planning areas have been established where most development has occurred and where intensity of use is planned to increase in the next 15 to 20 years. The areas include Chandler Road, the Marsh Road and Business-69 Development District, and Bath Village. The purpose of developing these planning areas is to ensure that special attention and planning is directed to these areas to ensure sound development.

### Land Use in Bath Charter Township

According to the 2008 Bath Charter Township Comprehensive Plan, the Township is comprised of 23,351 acres of land of which approximately 38 percent is developed. Bath is a predominately residential

community, with 7,871 (33 percent) acres classified as residential. The Township has a large portion of land in reserve for recreational and conservation purposes, including the Rose Lake Wildlife Conservation Area (2,700 acres) and Bengel Wildlife Center (261 acres). These and other public lands and parks represent a total of 3,889 acres or 17 percent of the Township. Agricultural land experienced a dramatic decline since 1990. In 1990, there were 6,942 acres classified as agricultural land, while in 2005 there were 3,104 acres, which represents approximately a 55 percent loss. Some of this loss can be explained by the 1,138 acres placed in the 425 Agreement with East Lansing. This land is still being used as agricultural land, but it may be used for future development.

### Schools

There are four different school districts that serve the educational needs of Township residents. The primary school district is Bath Public Schools, which serves the largest geographical area in the Township. Children in the southeast portion of the Township attend Haslett Public Schools. The southwest portion of the Township is part of the East Lansing School District. Children in the northeast corner attend Laingsburg Community Schools.

### Transportation

The east-west thoroughfare in Bath Charter Township is I-69, which is a major expressway and truck route that carries traffic from Indiana to Port Huron. Two exits carry traffic off I-69 in Bath Charter Township. The easterly exit of Marsh Road/Saginaw Road/Business 69 carries traffic into East Lansing. The westerly exit of Webster Road carries traffic northward into Bath Charter Township. Other major roadways in Bath Charter Township include the north-south routes of Chandler, Marsh, Upton and Park Lake Roads, and the east-west route of Clark Road.

## **ADMINISTRATIVE STRUCTURE**

### *How Parks Function in Bath Charter Township*

#### **Historical Background**

Prior to the mid-1990s, Bath Charter Township and Bath Community Schools worked together under a parks and recreation activities cooperative agreement. Under this agreement, active recreational programming was hosted on school property with coordination and maintenance performed by both the School District and the Township. Bath Charter Township relied on the Bath Community School's Superintendent, the Township Board and the Park Lake Advisory Board for input regarding the introduction and planning of recreational activities.

In the mid-1990s, Bath Charter Township incorporated the position of a permanent, part-time Parks & Recreation Director to meet the ongoing needs of the growing Township in terms of managing facilities and planning programs.

#### **Organizational Structure**

A Board of Trustees governs Bath Charter Township. The Parks & Recreation Committee advises the planning of the parks system, including the 5-Year Parks and Recreation Plan, and the operation of recreation programming.

The Township Superintendent, a full-time paid position that reports to the Board of Trustees, handles the day-to-day management and supervision of Township functions. The Administrative Services Coordinator, a full-time paid position that reports to the Township Superintendent, provides oversight for the position of Parks & Recreation Director.

The Administrative Services Coordinator meets with the Parks & Recreation Committee, an appointed advisory body, on the second Monday of each month for guidance and direction on parks and recreation functions in the Community.

The Parks & Recreation Director plans, organizes, and supervises all events and programs of the Parks & Recreation Department. A more complete listing of the major duties and responsibilities of the Parks & Recreation Director is provided in Appendix A.

The Bath Charter Township Department of Public Works is responsible for maintenance of the park system. The Department is supervised by the Township Superintendent, and is staffed by three full-time employees and two regular part-time employees. Seasonal employees are used on an as-needed basis. Please refer Figure 3 for the organizational structure for Parks & Recreation in Bath Charter Township.



#### **Programming**

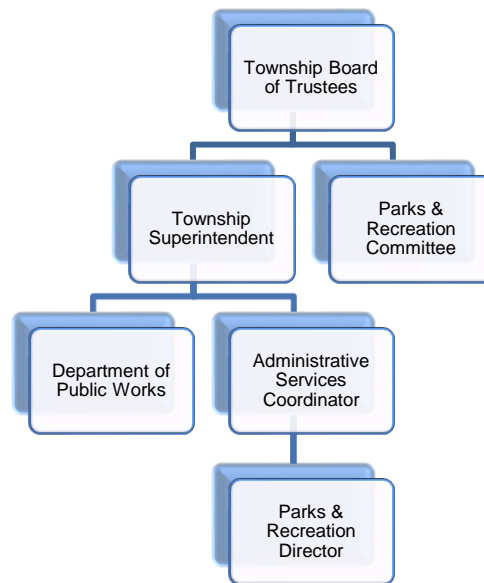
Bath Charter Township offers a variety of adult and youth programs, clinics and sports leagues throughout the year. Current program offerings are listed below.

**All Ages:** Buck Pole, Hunter Safety, Ice Skating, Fishing Contest, Holiday Sweets Exchange, 5K Walk/Run, Fingers & Toes Before it Snows, Summer Park Series, Ice Cream Social, and Snow Sculpture Competition.

**Youth:** U6 Soccer, Flag Football, Truck or Treat, K-1 Basketball Clinic, Baseball, Basketball, Dance, Easter Bunny Event, Volleyball (YMCA), Bee Cool!, Running Club, Boys High School Soccer Club, Thriller Dance, Bike Rodeo, and Volleyball Clinic.

**Adult:** Zumba, Scrapbooking, Scrap Around the Clock, Men’s Basketball, Gentle Yoga, Drums Alive, Women’s Basketball, and First Aid/CPR/AED Training.

*Figure 3: Parks & Recreation Organizational Structure.*



### **Current Partnerships & Providers**

Partnerships are mutually beneficial relationships that offer individual organizations assets that might otherwise not be available if the organizations decide to pursue goals independently. Partnerships can avoid unnecessary duplication of services, provide for the pooling of scarce resources and promote coordinated mutual efforts to resolve common problems to benefit all concerned. The Bath Charter Township Parks & Recreation Department has worked with a number of community partners who enjoy the mutual benefit of shared goals and common interests.

### **Public Sector Agencies**

Bath Charter Township has partnered with public sector agencies in land sharing agreements, project funding, regulatory compliance, manpower and shared resources. The Township works closely with the State of Michigan, and the Department of Natural Resources.

### **Local Clubs & Organizations**

These partnerships benefit and enrich the community by supporting local clubs and organizations that provide programs and services at Township facilities. Some local partners include the Bath Community Schools, Meridian Township Parks & Recreation, YMCA of Lansing, Bath Township Police Department,



Bath Township Fire Department, Park Lake Advisory Board, Friends of Park Lake, Local School Districts, Lakeside Chapel Outreach Center, Bath Township Senior Center, Bath Farmers Market, Bath Township Public Library, Bath Downtown Development Authority, Bath Public Art Committee, Tri-County Bicycle Association, Bath School Museum, Bath School Board, Bath Days Festival Committee, Bath American Legion, and Bath Lions Club.



### Professional Associations

Professional Associations provide networking opportunities, research and development information, staff development, and recruiting opportunities. Some professional association partners include the Michigan Recreation & Parks Association, and the Southern Michigan Recreation & Parks Association.

### Role of Volunteers

Bath Charter Township offers a wide variety of sports, special events, recreational classes and other activities for youth and adults. The Township relies heavily upon volunteers to coach and lead different activities. Approximately 125 volunteers and businesses assist each year with the numerous programs offered.

### Budgets and Funding

The Bath Charter Township General Fund provides primary funding for the Parks & Recreation Department functions. Additional funds are generated from rentals, user fees, registration fees, donations, and public and private grants and foundations. Multiple year budget snapshots for the Parks & Recreation Department are shown in Figure 4 below. A complete 2018 budget is available in Appendix B.

Figure 4: Parks & Recreation Department Budget

|                         | 2015 <sup>Actual</sup> | 2016 <sup>Actual</sup> | 2017 <sup>Budgeted</sup> |
|-------------------------|------------------------|------------------------|--------------------------|
| Salary & Benefits       | \$28,629               | \$27,739               | \$28,065                 |
| Operation & Maintenance | \$16,892               | \$29,865 <sup>1</sup>  | \$20,766                 |
| Capital Expenditures    | \$0                    | \$0                    | \$60,000 <sup>2</sup>    |
| Programming             | \$22,821               | \$22,468               | \$34,003                 |

### Budget Notes

<sup>1</sup>Increased 2016 Operation & Maintenance due to expanded weed treatment of Park Lake.

<sup>2</sup>\$60,000 was budgeted for 2017 for construction of restrooms at James Couzens Memorial Park. Sealed bids received were significantly over-budget. The Board of Trustees determined the construction would not proceed.

## RECREATION INVENTORY

### *Bath Charter Township Park Facilities*

#### **Kinds of Parks**

Classifying parks into categories helps define their role in the overall system, demonstrates their relationship to each other, highlights deficiencies, helps to develop an Action Program, and assists in allocating funding. The classification system described below is adapted from the National Recreation & Parks Association Guide recommended by the MDNR for recreation standards. It describes park types based on size, service area, facilities, and user groups.

1. A Mini-Park is less than one acre in size and is less than ¼ mile from a residential setting. Access is primarily pedestrian and by bicycle, with no on-site parking. It is used to address limited, isolated, or unique recreational needs.
2. Neighborhood Parks serve as the recreational and social focus of a neighborhood. These parks are easily accessible by neighborhood populations and are geographically centered within safe walking or biking distance. The service area is generally ¼ to ½ mile.
3. Schools can combine parks with school sites to help meet the recreational space needs for the Community. Mini-Parks, Neighborhood Parks, and School Parks all tend to be part of a smaller municipal park system found in a city.
4. Community Parks serve a broader purpose than Neighborhood Parks. They have more amenities and usually serve the entire Community. They are larger in size than Mini-Parks or Neighborhood Parks. Access is primarily vehicular and parking is included on-site.
5. A Natural Resource Area is land set aside for preservation of significant natural resources, remnant landscapes, open space, and visual aesthetics/buffering.
6. A Sports Complex consolidates heavily programmed athletic fields and associated facilities.
7. A Special Use Park generally covers a broad range of parks and recreation facilities oriented toward single-purpose use.

#### **Accessibility**

Creating a park system that is safe, accessible and usable to all individuals, including those with disabilities, is essential. A grading system has been developed by the MDNR to easily identify those parks and facilities, which are most and least handicap accessible and usable, based on the American Disabilities Act (ADA) Guidelines. The accessibility grading system uses a five-point system ranging from one (none of the facilities/park areas meet accessibility guidelines) to five (the entire park was developed/renovated using the principals of universal design). Refer to Figure 5 for the Accessibility Grading System.

During the summer of 2017, Bath Township conducted an ADA compliance assessment of the parks owned and operated by Bath Charter Township. The assessment consisted of a visual inspection of each park in regards to facility access and circulation. Bath Charter Township is dedicated to improving accessibility at each of its parks as improvements are made. This includes accessible parking, paths, restrooms, activity areas, amenities, and signage.

Figure 5: Accessibility Grading System

| MDNR Accessibility Grading System<br>for Parks & Recreational Facilities |   |
|--|---|
| Accessibility Grade  | Definition  |
| 1  | None of the facilities/park areas meet accessibility guidelines.                  |
| 2  | Some of the facilities/park areas meet accessibility guidelines.                  |
| 3  | Most of the facilities/park areas meet accessibility guidelines.                  |
| 4  | The entire park meets accessibility guidelines.                                   |
| 5  | The entire park was developed/renovated using the principles of universal design. |

**Parks in Bath Charter Township**

Bath Charter Township owns six developed parks and four undeveloped parcels that are designated for future park use. The six developed parks comprise 35.3 acres and the four undeveloped parcels add an additional 55 acres for potential park land.

The Bath Charter Township parks inventory was conducted during the summer of 2017. On August 14, 2017, the Parks & Recreation Committee and Township staff reviewed the inventory from the 2012 Recreation Plan and provided updates based on site visits. A description of each park and its amenities is given on the following pages. A Map of Parks, Parcels & Facilities is available in Appendix C.

**James Couzens Memorial Park**

Acres: 2

Accessibility: 3

Type: Community Park

Service Area: Entire Township & Beyond

This two-acre park located on Main Street is the site of a 1927 Bath School Memorial and State Historical Marker, as well as



a Veterans Memorial. Couzens Park has been the site of festivals, reunions and outdoor concerts, and currently is the site for the Bath Farmers Market and the annual Bath Days Festival. The park includes a picnic pavilion and benches. The property is located in the Downtown Development Authority District.

## Wiswasser Park

---

Acres: 1.5

Accessibility: 3

Type: Community Park

Service Area: Entire Township

Wiswasser Park is a family-oriented park located on the east side of Park Lake on Park Lake Road. Park amenities include a picnic pavilion with electrical service and seating for up to 60, a grill, restrooms and a drinking fountain, horseshoe pits, and a barrier-free playground.



## Rickard Boat Launch

---

Acres: 1

Accessibility: 2

Type: Boating Access Site

Service Area: Entire Township & Beyond

The Rickard Boat Launch is located on the east Shore of Park Lake and it is the only public access for boaters and anglers on Park Lake. The facility provides a boat ramp and mooring dock, a large paved parking lot for vehicles and trailers, and a grassy picnic area.



## Park Lake Beach

---

Acres: 1.5

Accessibility: 3

Type: Special Use

Service Area: Entire Township

Park Lake Beach is located on the north Shore of Park Lake. The park includes a sandy beach, defined swimming area, pavilion, picnic area, and a fishing dock.



## Bath Charter Township Soccer Park

---

Acres: 4.3

Accessibility: 3

Type: Sports Complex

Service Area: Entire Township & Beyond



The Bath Charter Township Soccer Park provides practice and competition fields for soccer players of all ages. The facility, which is located on Gary Lane, includes parking, a pavilion, maintenance shed, well and irrigation, and electrical service. The Bath Soccer Club uses the fields for its youth soccer program.

## Fletcher-Robson Nature Park

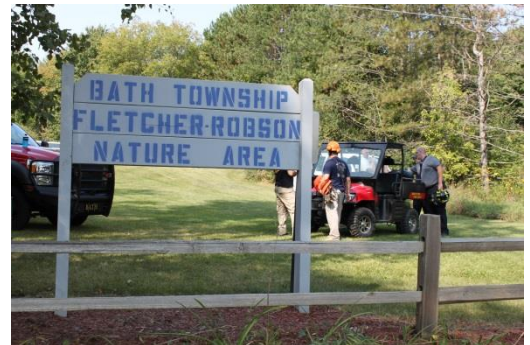
---

Acres: 25

Accessibility: 1

Type: Nature Area

Service Area: Entire Township



Fletcher-Robson Park is located on Robson Road, south of Clark Road. It is a quiet nature area that includes marked, semi-improved trails that wander through a wooded landscape. Benches and parking are included at the park.

## Undeveloped Parcels

---

The Township owns four additional parcels of land that are being held for potential future park development.

1. Park Lake Preserve: This 37+-acre parcel is located on the south and west sides of Park Lake. Possible uses could include developing a trail through this scenic property that would connect Webster and Park Lake Roads. The Parks & Recreation Committee has and will continue to work with the Park Lake Advisory Board and the Friends of Park Lake on the development of this preserve.
2. Upton Road Site: This 19-acre site is located immediately south of I-69 on the east side of Upton Road. It is the former logistics and staging site for the development of I-69, and the terrain is rugged from excavation and earthwork. Possible uses could include developing this property into an active family park.

3. North Webster Road Site: This five-acre parcel is located one half-mile north of Sleight Road on the east side of Webster Road. The parcel is largely wooded. It contains a two-track drive that leads to an open area at the bottom of a large hill in the middle of the property.

4. Sleight Road Site: This five-acre site is located approximately one half-mile east of Webster Road on the south side of Sleight Road. The property is adjacent to the Bath School District property to the south and west. A portion of the property is used by the Bath School District as a part of a cross-country course.

### **Indoor Facilities**

---

The Township owns two indoor facilities that are used for recreation related activities.

1. Senior Center: The Senior Center is a 2,569 square foot building that is part of the Township governmental complex at 14480 Webster Road. The facility offers a variety of programs catered toward seniors, as well as a meal program.

2. Bath Charter Township Community Center: The 3,500 square foot Community Center is used for a wide variety of indoor recreation activities such as archery, dancing, and scrapbooking.

### **Other Significant Recreational Facilities in Bath Charter Township**

---

In addition to the facilities described above, there are two other significant recreational facilities located in, but not controlled by, Bath Charter Township:

1. Rose Lake State Wildlife Area: The Rose Lake State Wildlife area encompasses 4,140 acres in Clinton and Shiawassee Counties. Over 2,500 acres of the Wildlife area are located in Bath Charter Township. Wildlife research has been a past primary use and may continue in some specific areas; however, hunting and other recreational uses are both allowed and promoted. The area offers many outdoor opportunities, a diversity of landscape types, and a variety of options throughout all Michigan's seasons. The land is described as moderately rolling farmland, abandoned fields, oak and lowland woods, and marsh. The area includes several special features such as wildlife management (ponds, floodings, brush piles, food patches, trees and shrub plantings), soil conservation practices, wildlife research, rifle and skeet ranges, and more. Further information and a map are included in Appendix D.

2. Bengel Wildlife Center: The Michigan Wildlife Conservancy owns and operates this 259-acre preserve. It is located on the south side of Drumheller Road, approximately one half-mile east of Webster Road. The Bengel Wildlife Center includes a Conference Center with landscaped grounds and approximately 1-1/2 miles of nature trails, including viewing platforms that overlook wetlands, bogs, and prairies. Further information and a map are included in Appendix D.

## Natural Resources Inventory

When studying parks and recreation resources in a Community, it can be worthwhile to examine significant natural resources that may be in need of conservation or protection. In Bath Charter Township, the most significant natural resources would most likely be considered to be the lakes, rivers, wetlands, and woodlands.

**Lakes:** Bath Charter Township contains six named lakes: Park, Fox Knoll, Mud, Perch, Potter, and Rose. These lakes are all generally shallow with an abundance of cattails and aquatic plants, making them ideal waterfowl habitat. Park Lake is the largest of the lakes with approximately 185 surface acres. It is the only lake with public boating and swimming access. These lakes are delineated in the park location map at the end of this section.

**Rivers and Watersheds:** Most of Bath Charter Township lies in the Looking Glass River Watershed. A small portion of the southeast part of the Township is located in the Red Cedar River Watershed. Bath Charter Township includes several county drains and two named creeks: Mud Creek and Vermillion Creek.

**Wetlands:** Bath Charter Township is dotted by wetlands in many areas, with some covering several hundred acres. As stated in the Bath Charter Township Comprehensive Plan and according to the Michigan Fish and Wildlife Service, Bath Charter Township contains approximately 9.98 square miles of wetlands.

**Woodlands:** Woodlands provide scenic beauty, as well as important wildlife habitat in Bath Charter Township. Woodlands are located in small and large tracts across Bath Charter Township. Many are located near the wetlands and creeks. Most of the larger tracts of woodlands are located on the east side of the Township.

## **Status Report for Grant-Assisted Parks & Recreation Facilities**

According to the Michigan Department of Natural Resources, Bath Charter Township has received the following state recreational grants. Post-completion reporting forms for the grant-assisted projects are included in Appendix D.

### **Project Title: Park Lake Beach Acquisition**

Project Description: Acquisition of 1 acre of land. Burying and removing all overhead wires.  
LWCF Project No. 26-01060 V  
Project Year: 1978  
Grant Amount: \$7,650.37  
Park is active and open to the public.

### **Project Title: Park Lake Beach & Parking**

Project Description: Acquisition of 1 acre to enhance existing beach and boat launch areas.  
Project No. TF93-208  
Project Year: 1993  
Grant Amount: \$42,800.00  
Beach and boat launch are active and open to the public.

### **Project Title: Wiswasser Park Playground & Equipment**

Project Description: Development included barrier-free playground equipment.  
Project No. 26-01697  
Project Year: 2009  
Grant Amount: \$73,500.00  
Playground and equipment has been installed. Park is open to the public.

### **Project Title: Park Lake Preserve Acquisition**

Project Description: Acquisition of 4.2 acres to connect Park Lake Preserve property to Park Lake Road for future nature/walking trail development.  
Project No. TF11-050  
Project Year: 2011  
Grant Amount: \$40,000.00  
Acquisition was completed in 2014.



## COMMUNITY INPUT

### *Listening to Bath Charter Township*

To comply with the MDNR Guidelines for the Development of Community Park, Recreation, Open Space, and Greenway Plans, Bath Charter Township offered several different opportunities for public input along with a 30-day period for review and comment on its draft plan. Those input opportunities and the methods for publicizing them are described below.

#### **Community Extravaganza**

Two community engagement workshops were held at the Township offices on October 25, 2017. Residents were able to provide comments to staff and write on maps to show where they would like to see new non-motorized ways and other recreational features.

The input collected at these sessions is contained in Appendix F.



#### **Online Survey**

An online survey, consisting of 18 questions, was available from August 1, 2017 through August 31, 2017. The results are discussed below. The composite results are provided in Appendix F.

Question 1: How many times did you visit each of the following in Bath Township in the past year?

145 respondents answered this question. The most visited parks were James Couzens Memorial Park (50 out of 145 responses, or 34.48%) and Wiswasser Park (45 out of 141 responses, or 32.62%). The least visited parks were Fletcher-Robson (118 out of 142 responses, or 80.28%) and the Soccer Park (98 out of 143 responses, or 68.53%).

Question 2: Why do you visit parks in the Bath Township?

139 respondents answered this question. Casual or informal use was the most popular answer (118 out of 145 responses, or 84.89%), followed by Community event (93 out of 145 responses, or 66.91%). The least popular answer was for Fitness and exercise (23 out of 145 responses, or 16.55%).

Question 3: How would you describe your overall satisfaction with Bath Township parks and facilities?

145 respondents answered this question. Overall, respondents were Satisfied (76 out of 145 responses, or 52.41%) to Very Satisfied (25 out of 145 responses, or 17.24%). Only 34 respondents were neutral, and 10 respondents were Dissatisfied/Very Dissatisfied.

Question 4: What additional facilities or amenities would you like to see added to the Bath Township park system?

84 respondents answered this question. Several comments requested restrooms and non-motorized trails.

Question 5: Have you or a member of your household participated in a program or activity in the past year sponsored by Bath Township Parks & Recreation?

145 respondents answered this question. Respondents split their answers equally between yes and no (69 out of 145 responses, or 47.59%).

Question 6: Please assess the current quality of the following types of recreational programs offered in Bath Township.

145 respondents answered this question. Youth Sports were rated Good/Adequate (53 out of 140 responses, or 37.86%). There was No Opinion of Adult Sports (89 out of 141 responses, or 63.12%). There was No Opinion of Instructional Classes (80 out of 141 responses, or 56.74%). There was No Opinion of Health & Fitness Classes (80 out of 140 responses, or 57.14%). There was No Opinion of Senior Activities (96 out of 144 responses, or 66.67%). There was No Opinion of Literacy Programs (95 out of 142 responses, or 66.90%). There was No Opinion of Arts & Crafts (94 out of 142 responses, or 66.20%). In all categories were the most popular answer was No Opinion, the next most popular answer was Good/Adequate.

Question 7: Are there other types of recreation related programs not listed in Question 6 that you would like to see offered in Bath Township?

35 respondents answered this question. Please see Appendix F for the responses.

Question 8: How do you learn about Bath Township Parks & Recreation programs or activities?

144 respondents answered this question. Respondents indicated that Social Media was the most popular way they learn about programs and activities (85 out of 144 responses, or 59.03%). Word of mouth was next (65 out of 144 responses, or 45.14%), followed by the Township Website (59 out of 144 responses, or 40.97%), and Township Signs (49 out of 144 responses, or 34.03%).

Question 9: Please rate your feelings regarding the following statements concerning lakes and natural areas in Bath Township.

144 respondents answered this question.

The preservation of natural areas and water resources in our community has a positive effect on the quality of my life. Respondents strongly agreed (80 out of 144 responses, or 55.56%).

It is important to enhance the natural resources and recreational opportunities at Park Lake. Respondents strongly agreed (84 out of 144 responses, or 58.33%).

I support the development of a walking trail through the Park Lake Preserve around the south side of Park Lake. Respondents strongly agreed (73 out of 144 responses, or 50.69%).

Question 10: If you or a member of your immediate family has a disability, please indicate which of the following would make Bath Township parks more user-friendly.

130 respondents answered this question. Paved trails (26 out of 130 responses, or 20.00%) was the most popular answer, followed by Accessible Restrooms (15 out of 130 responses, or 11.54%). No one with a disability in our family was reported by 74.62% of respondents, or 97 out of 130.

Question 11: What do you like best about parks and recreation in Bath Township?

57 respondents answered this question. Please see Appendix F for the responses.

Question 12: What would you do to improve parks and recreation in Bath Township?

58 respondents answered this question. Please see Appendix F for the responses.

Question 13: What types of financing tools would you consider supporting for additional Parks & Recreation investments? Responses were ranked in the order of preference with "1" being the most preferred, "7" being the least.

122 respondents answered this question. Grants were ranked as the most popular financing tool, followed by Use More Township Funds, and Crowd-Funding & Fundraising.

Question 14: According to the map of Bath Charter Township, where do you live in Bath?

142 respondents answered this question. Please refer to Figure 6 for survey zones. Most respondents were from Zone 4 (44 responses out of 142, or 30.99%), followed by Zone 3 (38 responses out of 142, or 26.76%), and Zone 6 (30 responses out of 142, or 21.13%).

Question 15: How long have you lived in Bath Township?

146 respondents answered this question. Most respondents have lived in Bath Township 21 or more years (59 responses out of 146, or 40.41%), followed by 11-20 years (28 responses out of 146, or 19.18%), and 3-5 years (22 responses out of 146, or 15.07%). Only three respondents to the survey did not live in Bath Township.

Question 16: What is your age?

146 respondents answered this question. Most respondents to the survey were 46-59 years of age (47 responses out of 146, or 32.19%), followed by 36-45 years of age (36 responses out of 146, or 24.66%), and 26-35 years of age (27 responses out of 146, or 18.49%).

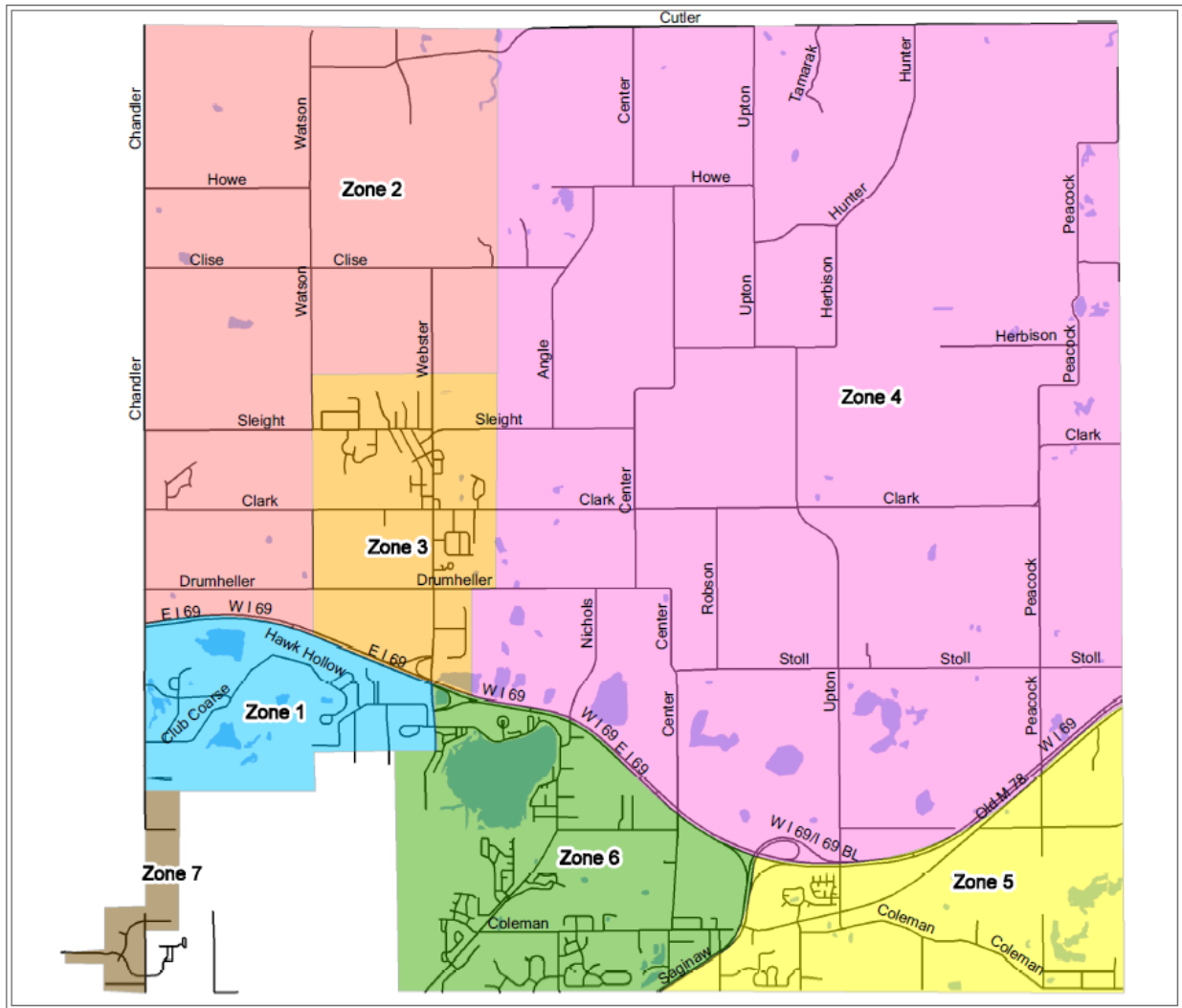
Question 17: How did you access this survey?

145 respondents answered this question. Most respondents accessed the survey through the Bath Township Facebook page (76 responses out of 145, or 52.41%).

Question 18: If you would like to receive further information about this survey and other updates relating to the 5-Year Parks & Recreation Plan, please enter your contact information below.

30 respondents answered this question.

Figure 6: Survey Zones



### Publicizing for Public Input

Bath Charter Township advertised and publicized the need for community input in several ways. The Township promoted the Community Extravaganza and Survey on its Facebook page and the Township website.

Business cards with a direct link to the survey were available at the Township Office, the Police Administrative Office, the Farmers Market, the Senior Center, the Library Center, during Bath Days, and in the Bath Days program.

Fliers for the Community Extravaganza were distributed throughout the community by Planning Department staff.

E-mail blasts were sent by Township staff. The DeWitt-Bath Review also ran advertisements regarding opportunities for input. Copies of the stories and advertisements are included in Appendix G.

## GOALS & OBJECTIVES

### *Looking to the Future*

Bath Charter Township formulated the following shared goals and objectives based upon the characteristics of the overall community and the input received.

#### ***GOAL A: Provide quality leisure time activities with special consideration given to improving health and fitness.***

##### *Objectives:*

- Provide both passive and active programming for a variety of ages and abilities of the population.
- Add recreational facilities based upon recreation trends and input from the community.
- Continue to work with existing recreation partners in the community to provide programs, leagues, and special events. Explore options for new and expanded partnerships to provide additional recreational opportunities.

#### ***GOAL B: Provide safe, broad community-based recreation opportunities that improve the overall quality-of-life for the community.***

##### *Objectives:*

- Continue to add amenities to Bath Charter Township park facilities based upon community input and need.
- Provide recreational opportunities for people with disabilities.
- Ensure that improvements and upgrades to park facilities are handicapped-accessible, where feasible.
- Continue program development for special needs populations, partnering with local and regional recreational providers, where possible.
- Add recreation support facilities to improve the overall user experience for park visitors.

#### ***GOAL C: Provide non-motorized pathways and routes for recreational and transportation use.***

##### *Objectives:*

- Expand the non-motorized pathways and routes in the Bath Charter Township area with a focus upon connecting existing parks, neighborhoods and local destination points.
- Explore ways to connect Bath Charter Township pathways and routes to neighboring communities.

***GOAL D: Develop recreation opportunities that focus upon and take advantage of Bath Charter Township water resources.***

*Objectives:*

- Develop opportunities, alone or in partnership with other agencies, to educate residents about natural resources in the area.
- Enhance water recreation opportunities on Park Lake.

***GOAL E: Retain public land for future generations.***

*Objectives:*

- Retain existing park land and acquire new public lands to meet the recreational needs of the community.
- Preserve and protect open space and other important natural features in the Bath Charter Township area.
- Encourage the use of drainage courses and utility easements for recreational purposes.
- Develop programs for evaluating future land acquisition.
- Preserve floodplains and wetlands for recreation use wherever possible.

***GOAL F: Create community awareness of Bath Charter Township recreational opportunities and promote them to residents and visitors.***

*Objective:*

- Communicate regularly with residents using a variety of media regarding park and recreation opportunities in Bath Charter Township.

## ACTION PLAN

### *Moving Forward*

Bath Charter Township developed a five-year Action Plan. The Action Plan details the direction the Township wishes to take over the next five years in order to maintain and improve the quality and diversity of area park and recreation opportunities.

The action items that have been identified for specific parks and those that relate to the overall Bath Charter Township Parks & Recreation Department are shown in Figure 7. Each action item was assigned a priority of 1 through 5, with 1 being most important and 5 being least important. Each action item relates to one or more of the numbered goals from the previous section entitled “Goals and Objectives.” Potential capital improvements described in this Plan have been established not only to provide a framework for decision makers, but also to enable the Township to apply for grant funding for these proposed projects.

The action item list is not a fixed element and is neither all-inclusive nor exclusive. The schedule reflects the results of the input received from various groups including residents, Township staff, commission members, and the Township Board. Future circumstances, especially funding availability, may change priorities or require reprioritization of items.

*Figure 7: Action Plan*

| Project   | Priority | Goal |
|---|----------|------|
| <b>James Couzens Memorial Park</b>  |          |      |
| Begin to implement Conceptual Plan through collaboration <sup>1</sup>       | 1        | B    |
| Add Restroom Facility <sup>2</sup>  | 1        | B    |
| Reconfigure Parking <sup>3</sup>  | 2        | B    |
| <b>Rickard Boat Launch</b>  |          |      |
| Preserve park land and shoreline  | 1        | AE   |
| Reconfigure parking   | 2        | B    |
| <b>Park Lake Beach</b>  |          |      |
| Relocation of Fishing Platform to North Shore Park Lake Access <sup>4</sup> | 1        | AD   |
| Expansion of Beach Area   | 2        | AD   |
| Add Restroom Facility with Changing Area                                    | 3        | B    |
| Improve Park Lake Beach Parking Lot   | 4        | E    |
| Develop Additional North Shore Parking <sup>5</sup>                         | 5        | E    |
| <b>Soccer Park</b>  |          |      |
| Add Restroom Facility <sup>2</sup>  | 1        | B    |
| <b>Fletcher-Robson Nature Park</b>  |          |      |
| Add Directional Sign to Park on Clark Road                                  | 1        | F    |
| Develop Electronic Trail Maps for Use with Cell Phones                      | 2        | CF   |
| Improve & Add Nature Trails   | 3        | AC   |
| Add a Gazebo or Picnic Shelter  | 4        | B    |
| Define & Delineate Parking Area   | 5        | B    |

| <b>Park Lake Preserve</b>                               |   |     |
|---|---|-----|
| Outline Phases for Development of Preserve              | 1 | BCD |
| Develop Preserve According to Phases of Conceptual Plan | 2 | BCD |
| <b>Upton Road Site</b>                                  |   |     |
| Determine Future Uses of Property                       | 1 | BE  |
| <b>Senior Activity Center</b>                           |   |     |
| Support Efforts to Expand Senior Center                 | 1 | AB  |
| <b>Community Center</b>                                 |   |     |
| Improve and/or Expand Community Center                  | 1 | AB  |
| <b>Parks Department/General</b>                         |   |     |
| Improve Community Awareness of Parks & Programs         | 1 | F   |

<sup>1</sup> Conceptual Plan submitted to Bath Township CIP on June 16, 2016. Collaborate with interested groups and committees creating community unity to make improvements in the memorial park.

<sup>2</sup> With adherence to Bath Township Building & Environmental Codes, “Restroom Facility” could include various design considerations, including green construction, composting or vault latrines.

<sup>3</sup> Reconfiguration would assist in defining boundaries for Farmers Market and school athletic events to protect integrity of the Park and the memorialization of the property.

<sup>4</sup> Bath Charter Township parcels 010-390-000-019-00 and 010-390-000-031-00.

<sup>5</sup> Bath Charter Township parcel 010-390-000-018-00.

### **Funding Potential Improvements**

Funding for the projects described under the Action Plan can come from a range of local, state, and federal programs, as well as private donors and foundations. Larger capital improvements will most likely need a funding plan to bring projects to fruition. Such a funding plan usually includes funding from several sources.

Grant funding is available for parks and recreation projects. However, applicants need to target potential funding agencies and programs very carefully so as to meet the specific criteria required.

Lastly, it is important to note that by participating in joint and regional planning for recreational projects, communities can stretch dollars further and still meet the needs of their citizens.



## **SUMMARY & ADOPTION**

### *A Plan Supported by the Community*

In its continuing effort to provide quality recreational opportunities for its citizens, Bath Charter Township has developed this Recreation Plan as a tool to guide the development of community parks and locations over the next five years. This Recreation Plan will also provide the Township with official eligibility for grants from the MDNR to assist the community in reaching its recreational goals.

#### **Review & Adoption**

Bath Charter Township completed the Recreation Plan document and it was made available for review at the Township Offices and on the Township website for at least 30 days beginning on January 2, 2018. This opportunity for review was advertised in the DeWitt-Bath Review. Comments were received from five different individuals representing the Downtown Development Authority, the Bath Township Farmers Market, the Park Lake Advisory Board, and the Tri-County Bicycle Association. These comments are available in Appendix I: Review & Adoption of the Plan.

On February 12, 2018, the Bath Charter Township Parks & Recreation Committee passed a resolution recommending that the Township Board adopt the plan.

The final opportunity for community input occurred at the advertised public meeting held prior to the adoption of the Recreation Plan. This meeting was on February 20, 2018 at the Bath Charter Township Board of Trustees meeting held at the Township Offices at 6:00 p.m. The Bath Charter Township Board of Trustees passed a resolution adopting the Recreation Plan. Copies of the advertisements and resolutions are included in Appendix I.