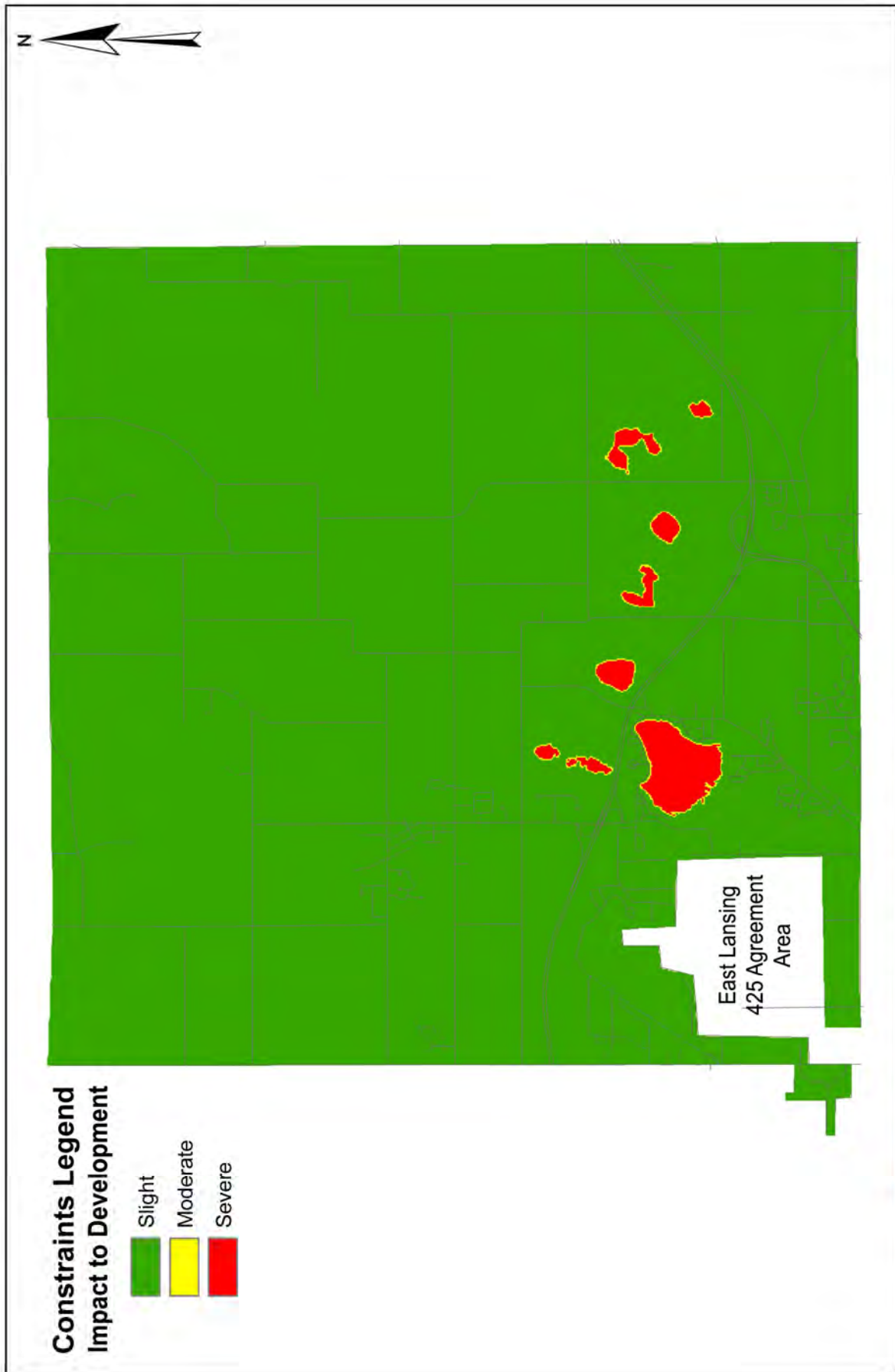


APPENDIX A
SITE CONSTRAINTS



LANSING OFFICE
725 Prudden Street, Lansing, MI 48906
GAYLORD OFFICE
123 West Main Street, Ste. 200, Gaylord, MI 49734
GRAND RAPIDS OFFICE
648 Monroe Ave. NW, Ste. 210, Grand Rapids, MI 49503

1.866.454.3923

10.01.2008
Not to Scale


Bath Charter Township

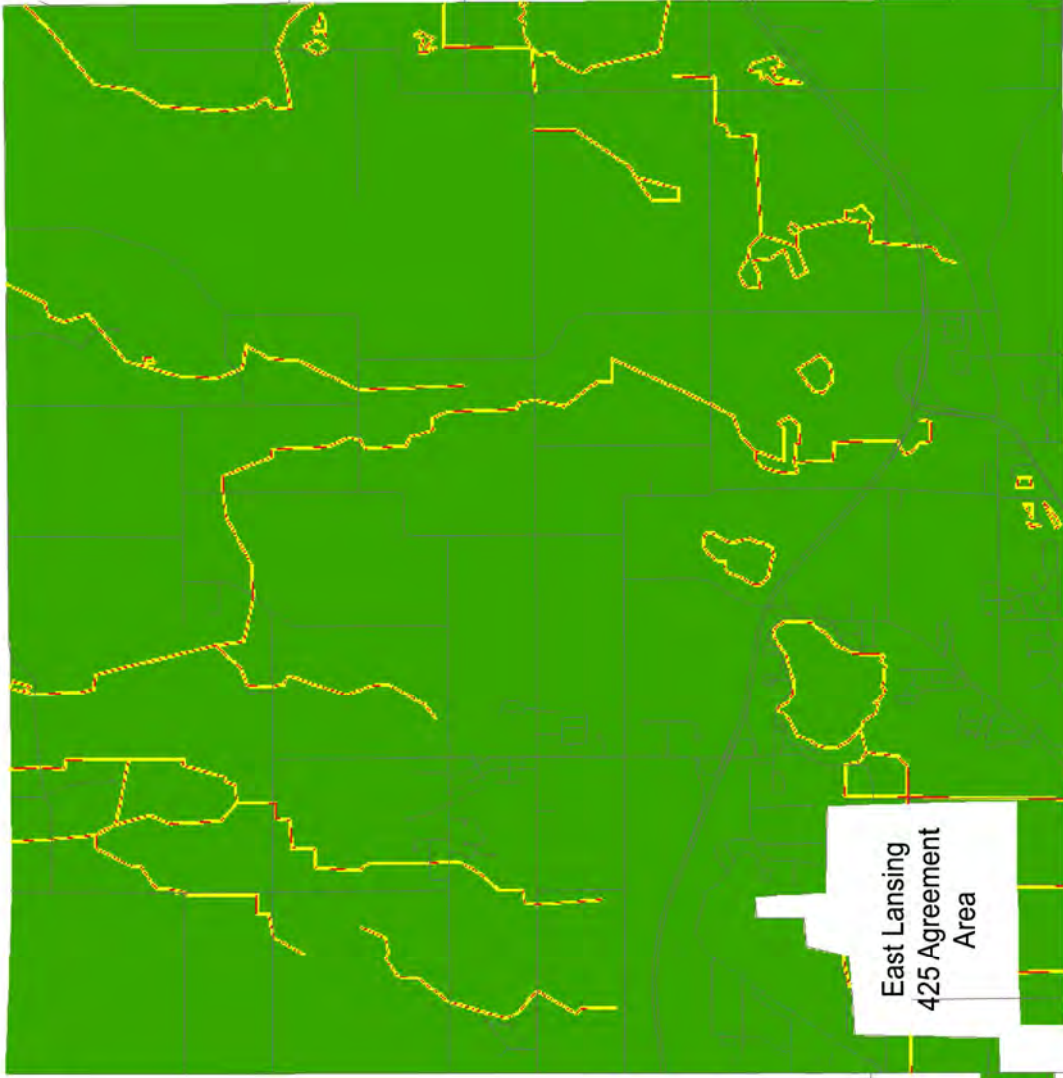
Constraints Map
Lakes

Bicycle & Non-Motorized
Pathway Development
Bath, MI



Constraints Legend Impact to Development

-  Slight
-  Moderate
-  Severe






Bath Charter Township
Bicycle & Non-Motorized
Pathway Development
Bath, MI

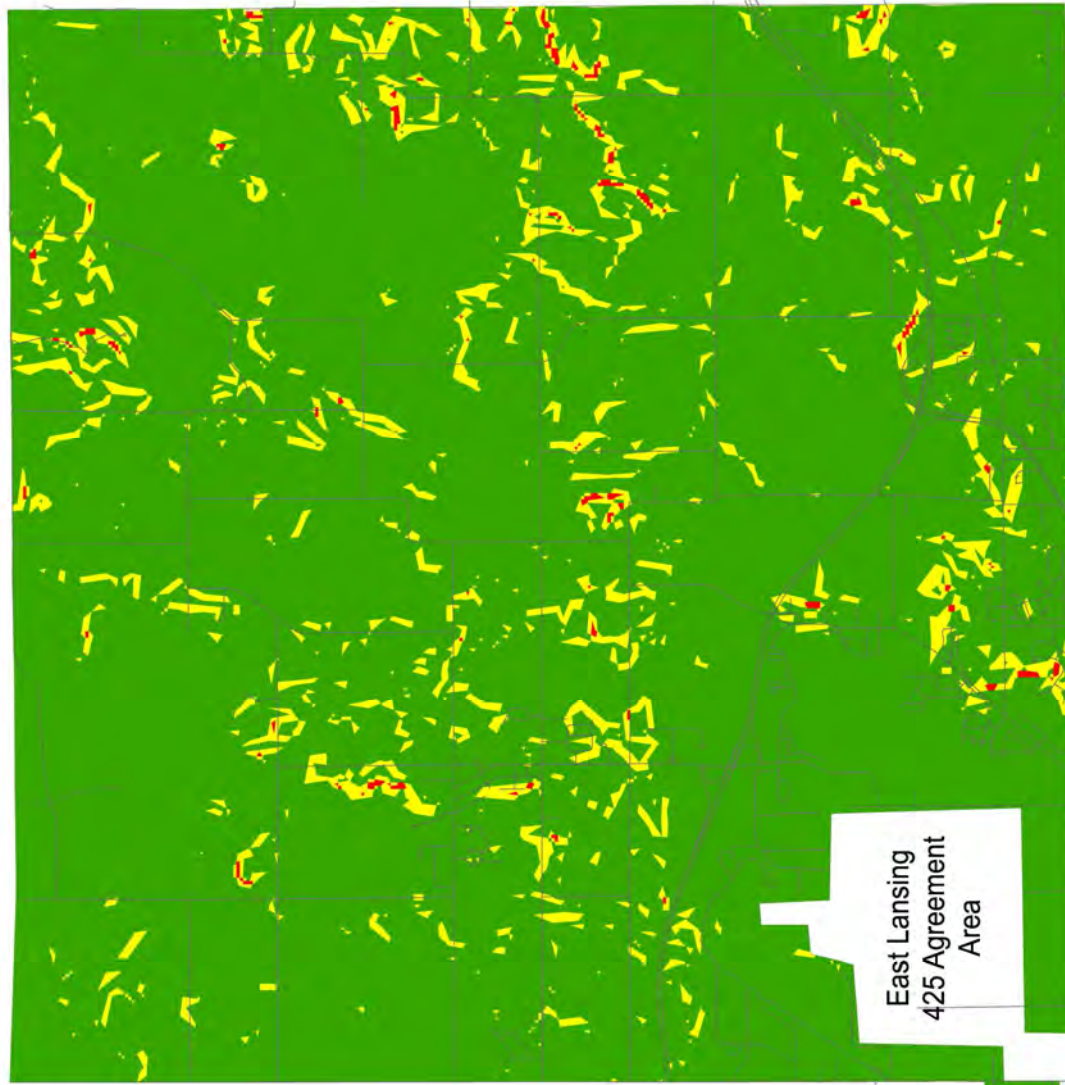
Constraints Map
Rivers

10.01.2008
Not to Scale

1,866,454,3923
LANSING OFFICE
725 Prudden Street, Lansing, MI 48906
GAYLORD OFFICE
123 West Main Street, Ste. 200, Gaylord, MI 49734
GRAND RAPIDS OFFICE
648 Monroe Ave. NW, Ste. 210, Grand Rapids, MI 49503

**Constraints Legend
Impact to Development**

-  Slight- 0-6%
-  Moderate- 6-12%
-  Severe- Above 12%



East Lansing
425 Agreement
Area



Bath Charter Township
Bicycle & Non-Motorized
Pathway Development
Bath, MI

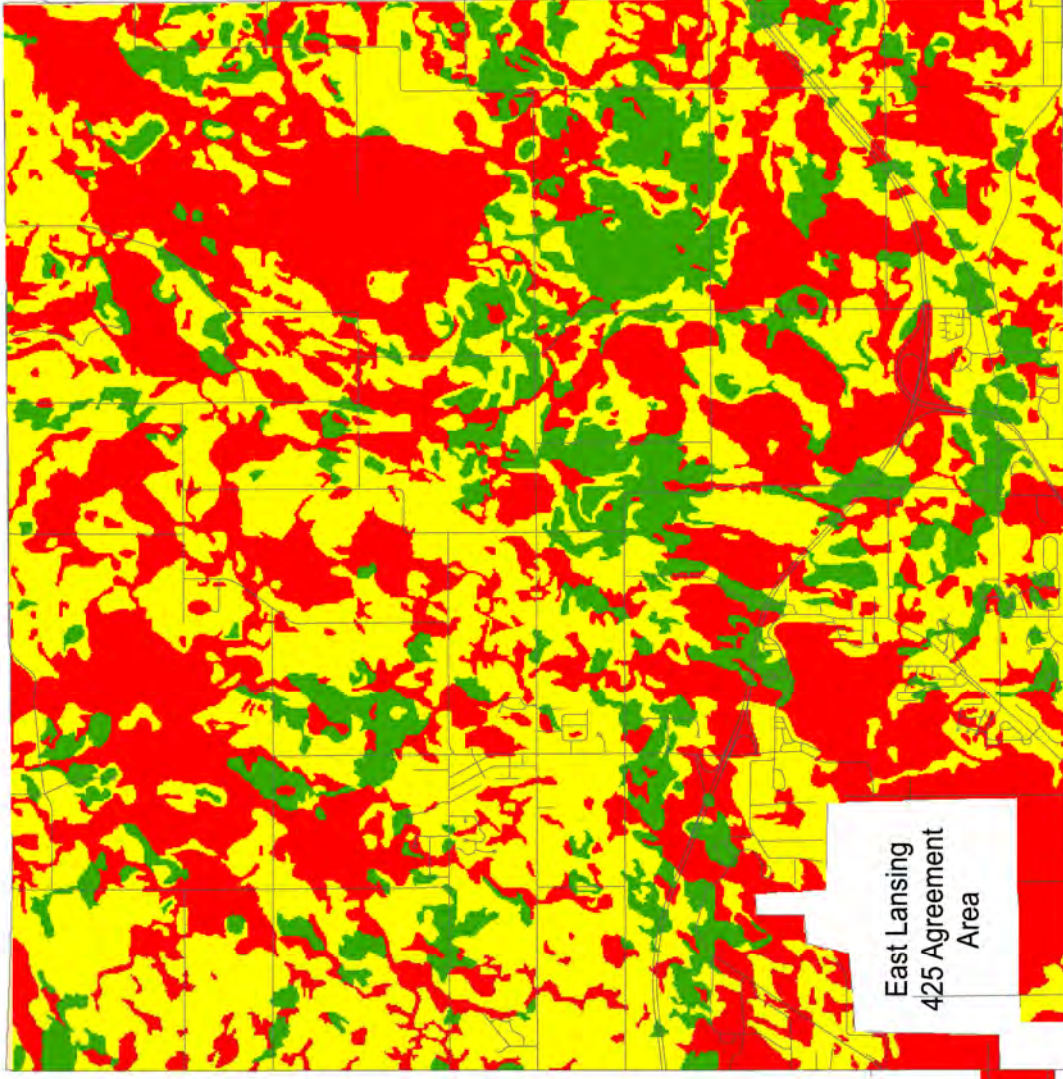
10.01.2008
Not to Scale

LANSING OFFICE
725 Prudden Street, Lansing, MI 48906
GAYLORD OFFICE
123 West Main Street, Ste. 200, Gaylord, MI 49734
GRAND RAPIDS OFFICE
648 Monroe Ave. NW, Ste. 210, Grand Rapids, MI 49503



Constraints Legend Impact to Development

-  Slight
-  Moderate
-  Severe



East Lansing
425 Agreement
Area



Bath Charter Township

Bicycle & Non-Motorized
Pathway Development
Bath, MI

Constraints Map
Soils

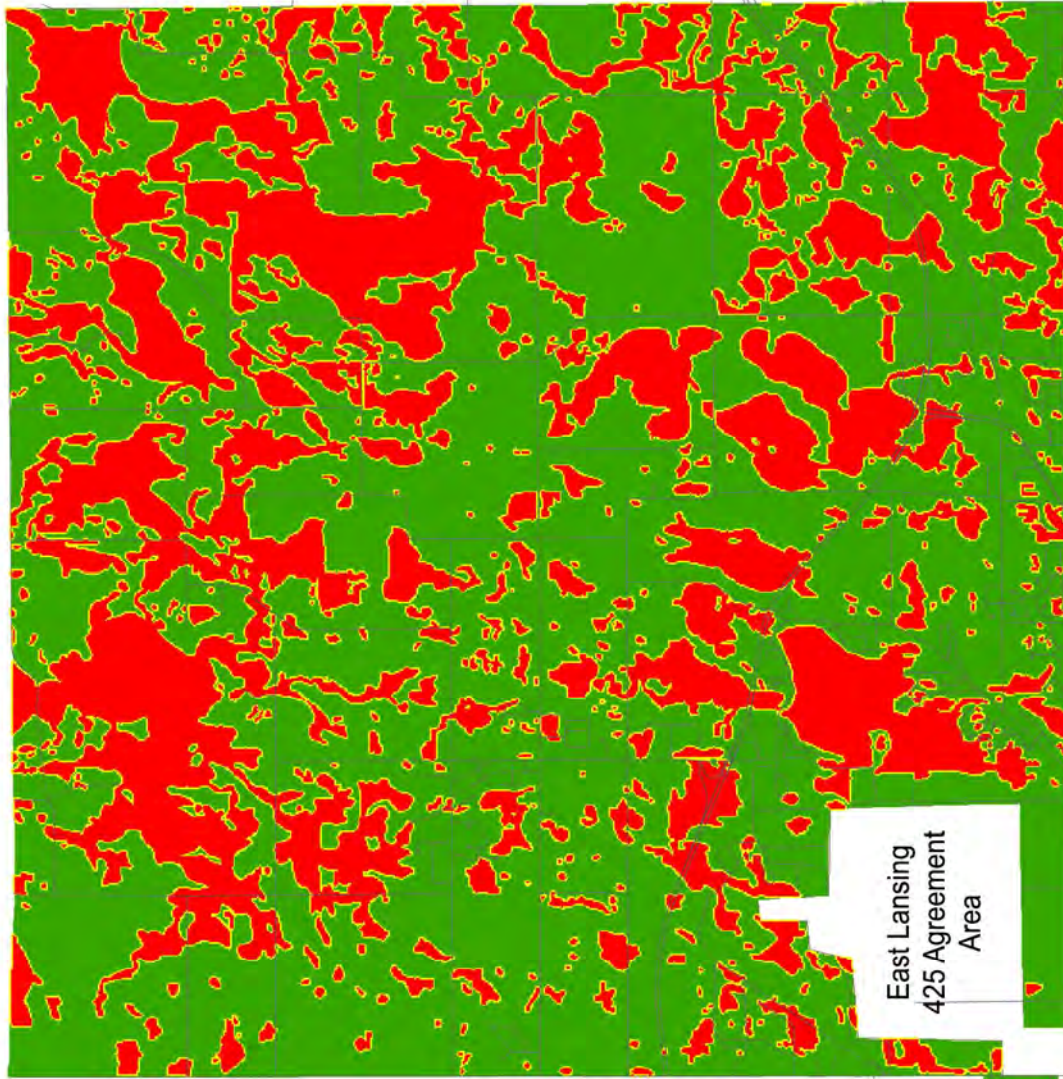
10.01.2008
Not to Scale

1,866,454,3923
LANSING OFFICE
725 Prudden Street, Lansing, MI 48206
GAYLORD OFFICE
123 West Main Street, Ste. 200, Gaylord, MI 49734
GRAND RAPIDS OFFICE
648 Monroe Ave. NW, Ste. 210, Grand Rapids, MI 49503



Constraints Legend Impact to Development

-  Slight
-  Moderate
-  Severe



East Lansing
425 Agreement
Area



Bath Charter Township
Bicycle & Non-Motorized
Pathway Development
Bath, MI

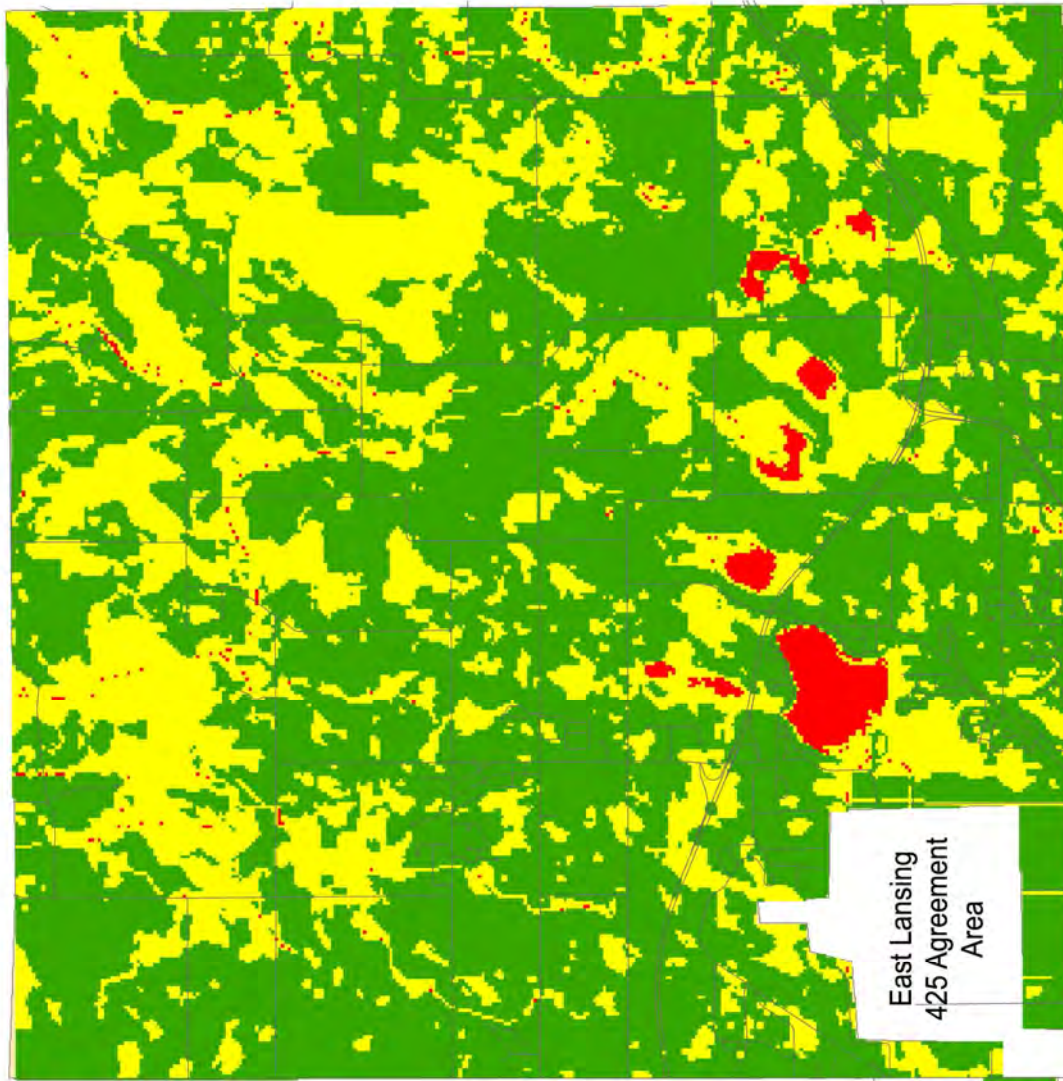
10.01.2008
Not to Scale

1,866,454,3923
LANSING OFFICE
725 Prudden Street, Lansing, MI 48206
GAYLORD OFFICE
123 West Main Street, Ste. 200, Gaylord, MI 49734
GRAND RAPIDS OFFICE
648 Monroe Ave., NW, Ste. 210, Grand Rapids, MI 49503

Constraints Legend

Impact to Development

-  Slight
-  Moderate
-  Severe



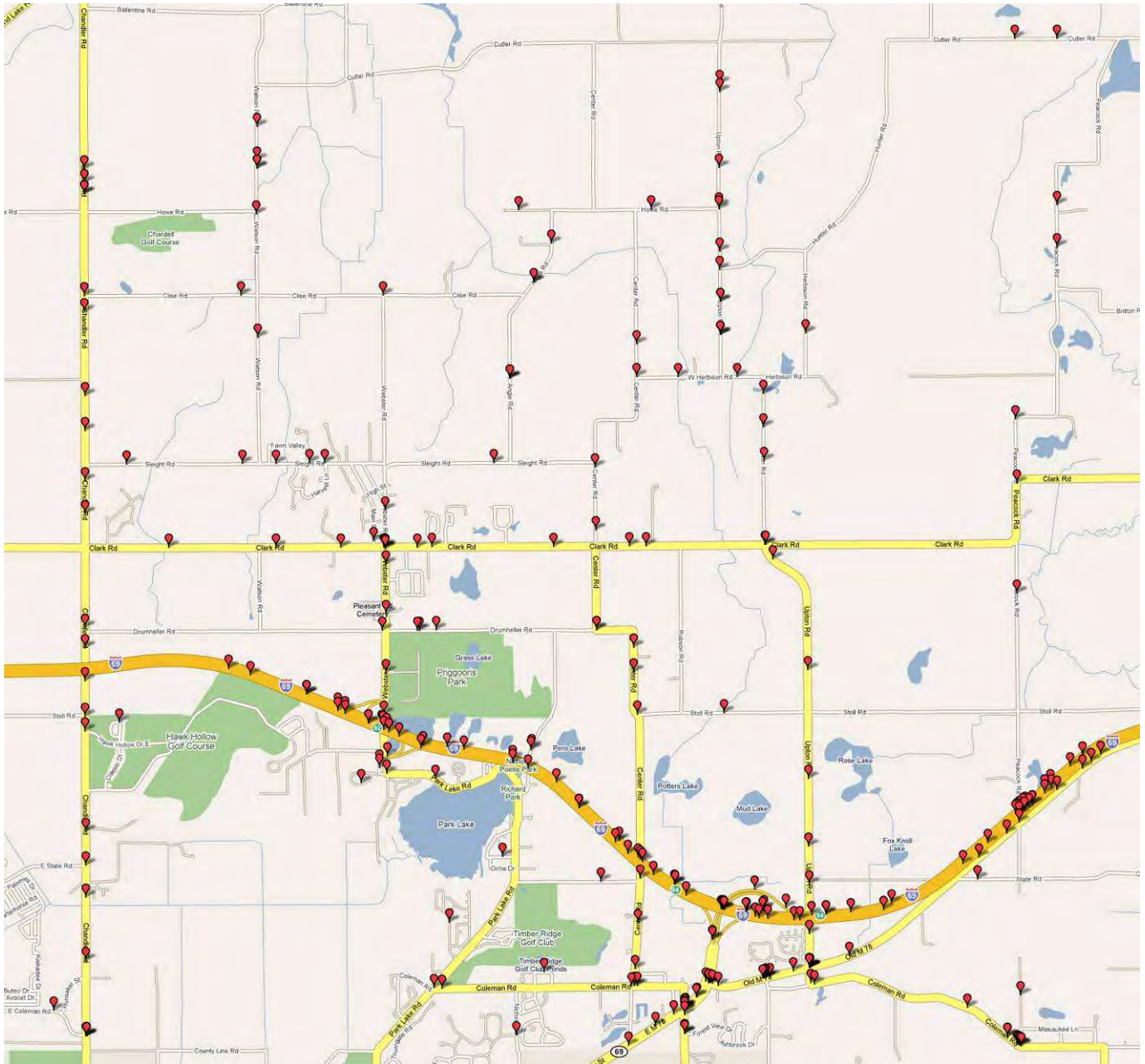
Bath Charter Township

Bicycle & Non-Motorized
Pathway Development
Bath, MI

Constraints Map
Final Suitability

10.01.2008
Not to Scale

1,866,454,3923
LANSING OFFICE
725 Prudden Street, Lansing, MI 48206
GAYLORD OFFICE
123 West Main Street, Ste. 200, Gaylord, MI 49734
GRAND RAPIDS OFFICE
648 Monroe Ave. NW, Ste. 210, Grand Rapids, MI 49503



2007 Traffic Accident Data for Bath Township